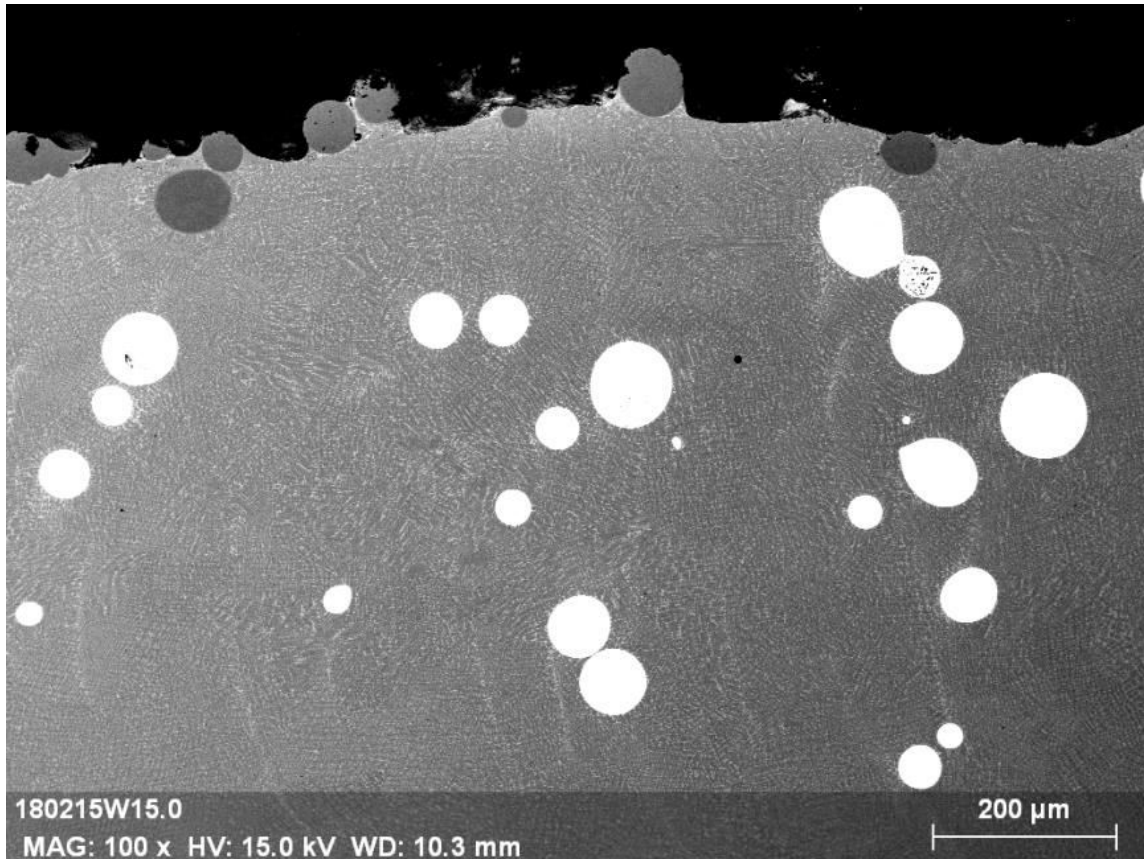


Tommaso MAURIZI ENRICI



« Carbide Wings »

Descriptif technique :

Scanning electron micrograph at 100x of a stainless steel 316L+WC composite (WC in white) coating obtained by additive manufacturing.

Technique de réalisation/apport scientifique :

The very high cooling rates, the particular heat fluxes and composition leads to the formation of complex carbide structures with carbide “wings” (white lines).

Provenance : Université de Liège